

**DREAMING  
OUT LOUD**  
INC.

# 2021 ANNUAL REPORT



# LETTER FROM THE ED

DREAMING  
OUT LOUD  
INC.

First published in the Progressive Magazine in 1962, James Baldwin drafted "A Letter to My Nephew". In that piece, he openly wonders about the future of his brother's child within the context of the ongoing 1960's epoch concerning the struggle for Black liberation in America.

As his narrative unfolds, Baldwin exclaims; "Please try to remember that what they believe, as well as what they do and cause you to endure does not testify to your inferiority but to their inhumanity". This cautionary note to his nephew is a reminder that what he may be made to endure is not an undue burden, heaped upon him in measure to his value. Rather, it is heaped upon him in spite of it.

Juxtapose the historical context within which Baldwin wrote the letter with the reality facing Black people today and a familiar portrait emerges. To put this in context, the last breaths of Breonna Taylor, George Floyd, and countless others depict that what we are made to endure, does not account for our humanity. The millions who have lost their lives to COVID-19 and its comorbidities of white supremacy, patriarchy, combined with a rather rapacious, extractive and violent capitalist economic system is further proof.

That we have survived these unfathomable challenges, is a tribute to our resilience, strength, and empathy - a natural ability to embrace others, although we are often denied compassion. How long can injustice prevail? How many times can one be required to assume the role of being superhuman? When can we rest, free from the grasp of overlapping systems of oppression that do not testify to the fullness of our humanity?

The pursuit of a just recovery devoid of the cascading impacts of the pandemic requires a new template. It has to be a just and holistic repair of our communities and involves the creation of systems that celebrate our humanity. Systems that cultivate success. We must not be set up to perpetually endure injustice and we must not be required to perform superhuman feats in order to be counted amongst other mortals. As humans, being afforded with opportunities to access adequate and truly affordable housing, healthy food choices, and communities safe from structural and intra-community violence is only right.

We demand holistic and comprehensive reparations to heal individuals and institutions, using this recovery as the new template for a new covenant between America and her people - Black people in particular. Black Lives Matter, a simple refrain with immutable truth, wavers ever so precariously on the precipice. Shall we fall into a new nadir, or advance towards repair?

We are here to sway the winds into the sails of justice, An edge where we are buoyed either towards the precipice of permanency or Where we are thrust in the midst of heavy seas.

**CHRISTOPHER BRADSHAW**

**Executive Director**



**MISSION / VISION / VALUES**

**Mission**

The mission of Dreaming Out Loud is to create economic opportunities for the DC metropolitan region's marginalized communities through building a healthy equitable food system.

**Vision**

DOL is rebuilding urban, community-based food systems through cooperative social enterprise: increasing access to healthy food, improving community health, supporting entrepreneurs and cooperatives from low-income communities; and creating opportunities for at-risk residents to earn sustainable, family-supporting wages and build wealth.

**Values**

We believe that all communities deserve equal access to fresh, healthy food choices, but that achieving this requires moving beyond the "access" paradigm to a focus on community self-determination and food sovereignty. This means that control of the food resources and food system assets that serve the community - including land and water, food-related enterprises, and the capital and labor that go into the food system - must rest with the community members themselves, not with outside entities who claim to know what our neighborhoods need or deserve. We work to create an integrated pipeline to jobs, economic opportunity, and community wealth-building that advances racial equity.

# VOCABULARY

(terms to define in report as spacer pages)

## Economic Opportunity

According to Law Insider, “economic opportunity measures the extent to which a community provides employment opportunity and mobility to its residents”. Individuals are born with inherent traits and abilities that can help them contribute their quota to society. Unfortunately, the incidence of systemic barriers within the nation means that some people are deprived of opportunities that can unlock their potential to earn a decent living. People of color, in particular, have borne the brunt of unjust systems in the United States and are deprived of opportunities to access the education, training, guidance and network required to achieve economic security and independence. Initiatives such as Dreaming Out Loud’s workforce development and entrepreneurship training programs drive profound change within the communities it serves. In addition, a fundamental restructuring of public school systems, particularly those within inner cities, will be a step in the right direction. Breaking down structural barriers will lead to the creation of ladders of opportunities for the segment of America’s children and their families who have been trapped in a vicious cycle of poverty.

## Marginalized Communities

IGI Global defines marginalized communities as “communities confined to the lower or peripheral edge of the society”. In America, the resulting legacies of slavery, sharecropping, and entrenched systemic racism has had a huge impact on black people. Due to systemic racism, blacks were denied involvement in mainstream economic, political and social activities. Consequently, communities reflecting unjust systems emerged where inhabitants often live in dire conditions. Poor health outcomes due to a lack of access to healthy food and efficient healthcare, high unemployment rates, poverty along with difficult life circumstances are some of the hallmarks of marginalization of black people. Unfortunately, although thriving communities where people, irrespective of their skin color can be a reality, systemic racism ensures the existence and perpetuation of marginalized communities. There have been debates and discussions focused on marginalized communities but until policies are changed and actionable steps are taken by the government, total transformation of marginalized communities will remain an “ideal” rather than a reality. In the interim, organizations such as Dreaming Out Loud will continue to be a beacon of hope by building community wealth through the use of food systems as a catalyst.

## Equitable Food System

An equitable food system is one that provides all members of the food system with access and the ability to actively participate while benefiting from the associated proceeds. Farmers, laborers, and producers should equally profit while consumers receive the residual value of increased access to fresh healthy foods that are culturally appropriate and appropriately priced. This requires a shift to a more inclusive and sustainable framework that views the food system as a comprehensive ecosystem that is able to support itself by empowering the people that keep the system running. This translates to farmers/producers that earn a living wage, have equitable access to markets, resources, capital, and the autonomy to participate in a competitive industry. Empowering the producer will promote business growth while increasing their capacity to hire and train staff, boost production, and ultimately serve their communities at a higher level. From this framework we see communities that create jobs with higher salaries, position entrepreneurs to develop and expand their businesses, empower marginalized groups through community based economic development, increase access to healthy foods, and allow communities to be more independent.

## PROGRAMMATIC PILLARS

Currently, Dreaming Out Loud implements critical programs at The Farm at Kelly Miller (FKM). It is a 2- acre farm and food hub program which was created in partnership with the Department of Parks and Recreation (DPR). Moreover, FKM is located directly behind Kelly Miller Middle School (KMMS) and serves as a hub aimed at increasing access to healthy foods for vulnerable populations. Through this program, DOL accomplishes the following goals:

- Contributes to a healthier workforce by making fresh produce available
- Creates employment opportunities
- Generates consistent revenue for marginalized farmers in our network

## WORKFORCE DEVELOPMENT

DOL has developed a hands-on food system workforce development program that uses the food system as a catalyst for change. Through this program, DOL creates the following:

- Economic opportunities while providing transferable skills and career pathways
  - Provides program participants with skills in Garden/Farming, Food Distribution, Customer Service, and Personal Leadership Development.

## COMMUNITY ENGAGEMENT

One of the myriad ways DOL engages with the community is through events and educational programs. These include:

- Annual Fall Festival
- Annual Spring Festival
- Volunteer Program

## ADVOCACY

DOL uses the food system as a lens, a platform, and a mechanism for realizing a broader vision of equity and racial justice. Since the organization recognizes that genuine systems-change requires an intentional and well thought out plan, DOL applies community organizing and actively participates in the legislative process.

## COMMUNITY SUPPORTED AGRICULTURE

September 2020 to September 2021

**\$96,945.47**

## WHOLESALE

September 2020 to September 2021

**\$331,414.36**

**P**ARTNERS

**P**ARTNER

**P**ARTNER

**P**ARTNER

**P**ARTNER

**P**ARTNER

**P**ARTNER

**P**ARTNER

**P**ARTNER

**P**ARTNER

**P**ARTNER

**P**ARTNER

**P**ARTNER

**P**ARTNER

**P**ARTNER

**P**ARTNER

**P**ARTNER



## FARM AT KELLY MILLER

####

of pounds grown

## PARTNERS: CITY BLOSSOMS

####

Number of Farmers That Received  
Technical Assistance

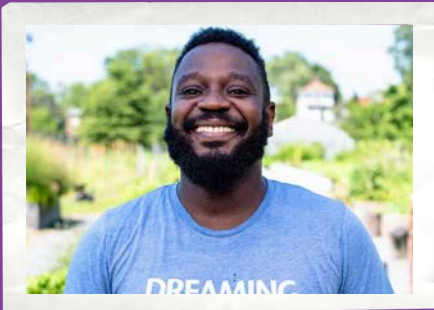
## VOLUNTEER PROGRAM

DOL provides volunteering opportunities to members  
of its service community and corporate entities.

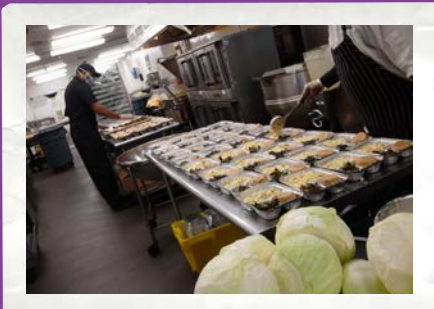
####

of volunteers

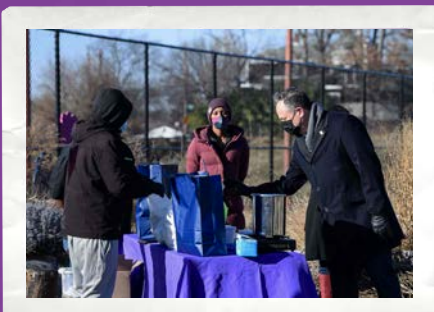
**IMPORTANT NEWS/MEDIA ARTICLES AND LINKS THAT  
HIGHLIGHT **DOL** WORK**



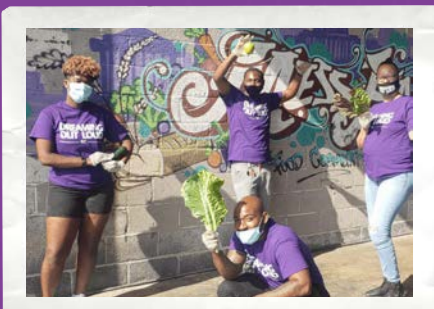
**GEORGETOWN AWARDS DC LEADER FOR  
MAKING FOOD EQUITY MORE THAN A DREAM**



**DC CENTRAL KITCHEN PARTNERS WITH  
WORLD CENTRAL KITCHEN AND  
DREAMING OUT LOUD FOR MOBILE  
FEEDING INITIATIVE**



**DOUG EMHOFF MAKES TRIP TO HIGHLIGHT  
FOOD INSECURITY IN FIRST OUTING AS  
FIRST-EVER SECOND GENTLEMAN**



**CATALYZING CAPITAL: DREAMING  
OUT LOUD - REFED**

# TEAM

**DREAMING  
OUT LOUD**  
INC.



**CHRISTOPHER  
BRADSHAW**

Founder,  
Executive Director



**ZACHARI  
CURTIS**

Operations Director



**DEVONTE  
HOWARD**

General Manager



**LESTER  
FRANKLIN**

Wholesale Coordinator



**MEAGAN  
MILLER**

Market Manager



**WILLIAM  
JENNINGS**

Market Manager

**AUDRE'ANA  
ELLIS**

Executive Assistant

**DREAMING  
OUT LOUD**  
INC.

# BOARD OF DIRECTORS

**JOVITA  
WELLS**

Chair

**APRIL  
MARTIN**

Secretary

**JOHNNY  
SEKILAY**

Treasurer

**WIL  
PARKER**

Member

**SUSAN  
"SUJI" SUTLER**

Member

**RICARDO  
VASQUEZ**

Member

**RONNETTE  
MEYERS**

Member

## **BREAKDOWN OF FUNDERS IN LAST FISCAL CYCLE BY DOLLAR RANGES**

### **\$100,000+**

- Craig's New List Foundation - \$300,000.00
- DC Greens - \$155,771.00
- Bainum - \$227,968.20
- Black Rock Foundation - \$100,000.00
- Clark Charitable Foundation - \$100,000.00
- Community Foundation - \$252,950.00
- The Kresge Foundation - \$115,000.00
- Patty Stoneseifer - \$150,000.00

### **\$50,000 - \$99,999**

- Carefirst - \$50,000.00
- Claneil Community Foundation - \$63,500.00
- DC Central Kitchen - \$70,000.00
- Kaiser Foundation - \$50,000.00
- William Bingham Foundation - \$50,000.00
- Fifth Generation Inc - \$69,500.00
- Frederick Henry and Diana Prince Foundation - \$85,000
- Philip L Graham Foundation - \$50,000.00
- J. Willard and Alice S. Marriott Foundation - \$75,000.00

### **\$25,000 - \$49,999**

- The Morris and Gwendolyn Cariftz Foundation - \$30,000.00
- Newman's Own Foundations - \$35,000.00
- Bernstein Management - \$25,000.00
- BNY Mellon - \$40,000.00
- Mehdi Pirzadeh - \$34,850.00

### **\$10,000 - \$24,999**

- Consumer Health Foundation - \$21,700.00
- Diverse City Fund - \$10,000.00
- Patagonia - \$10,000.00
- All Souls Church - \$10,000.00
- Capital One - \$20,000.00
- Richard Schwartz Family Foundation - \$20,000.00
- Washington Convention - \$19,850.00
- Share Our Strength - \$25,000.00
- United Healthcare Svcs - \$10,000.00
- Life Asset Inc - \$11,449.78
- WFM - \$13,723.59

### **\$5,000 - \$9,999**

- Farm Aid Inc - \$5,000.00
- Greater Horizon - \$5,000.00
- Centric Business System - \$5,000.00
- Sunbelt Beverage - \$5,000.00
- Eugene and Agnes E. Meyer Foundation - \$5,000.00
- JBG Smith - \$5,000.00
- Mckay Family fund - \$5,000.00
- AmTrust - \$6,022.00
- Fidelity Investments - \$7,500.00
- Clif Bar Foundation - \$9,500.00